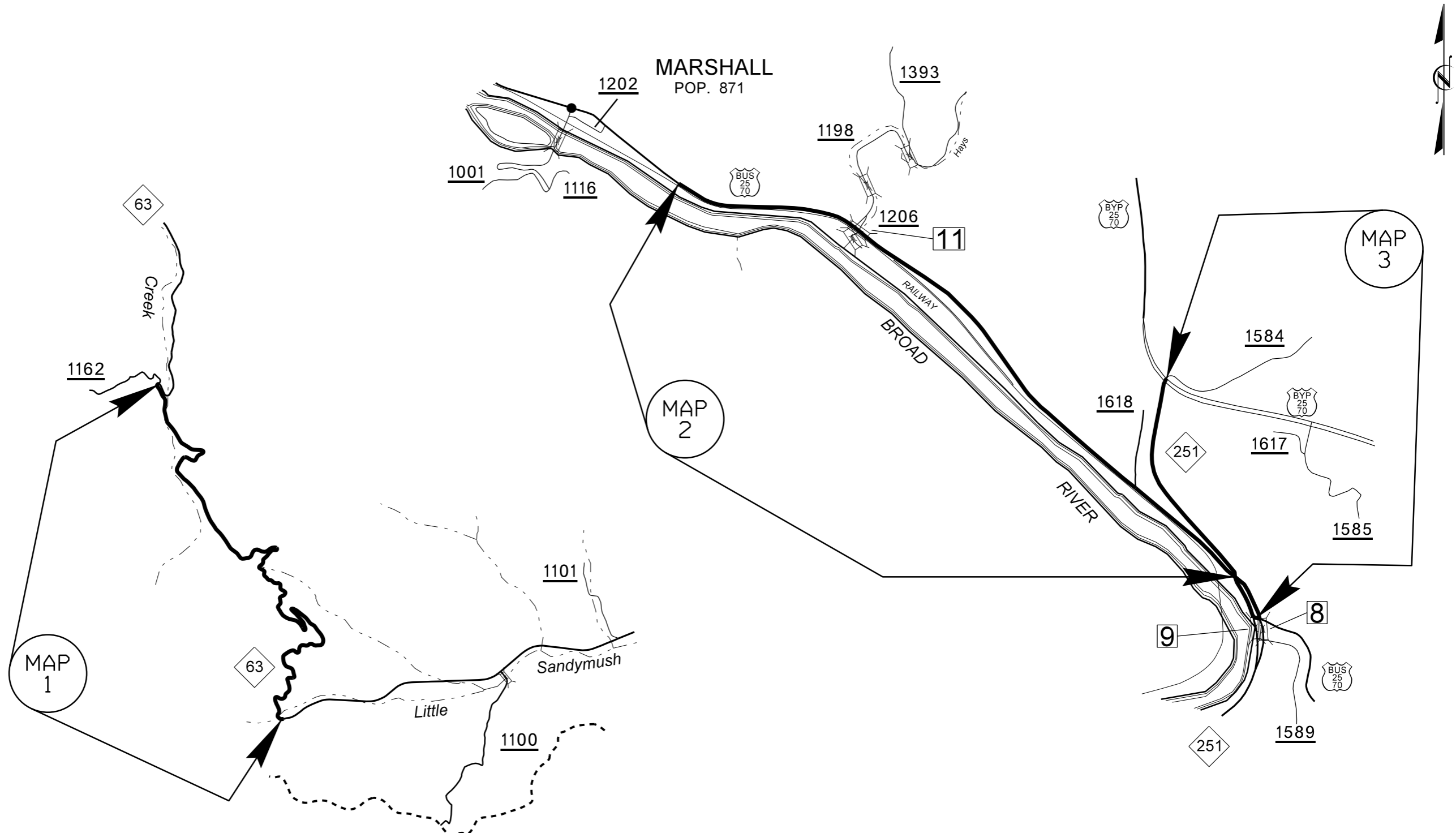


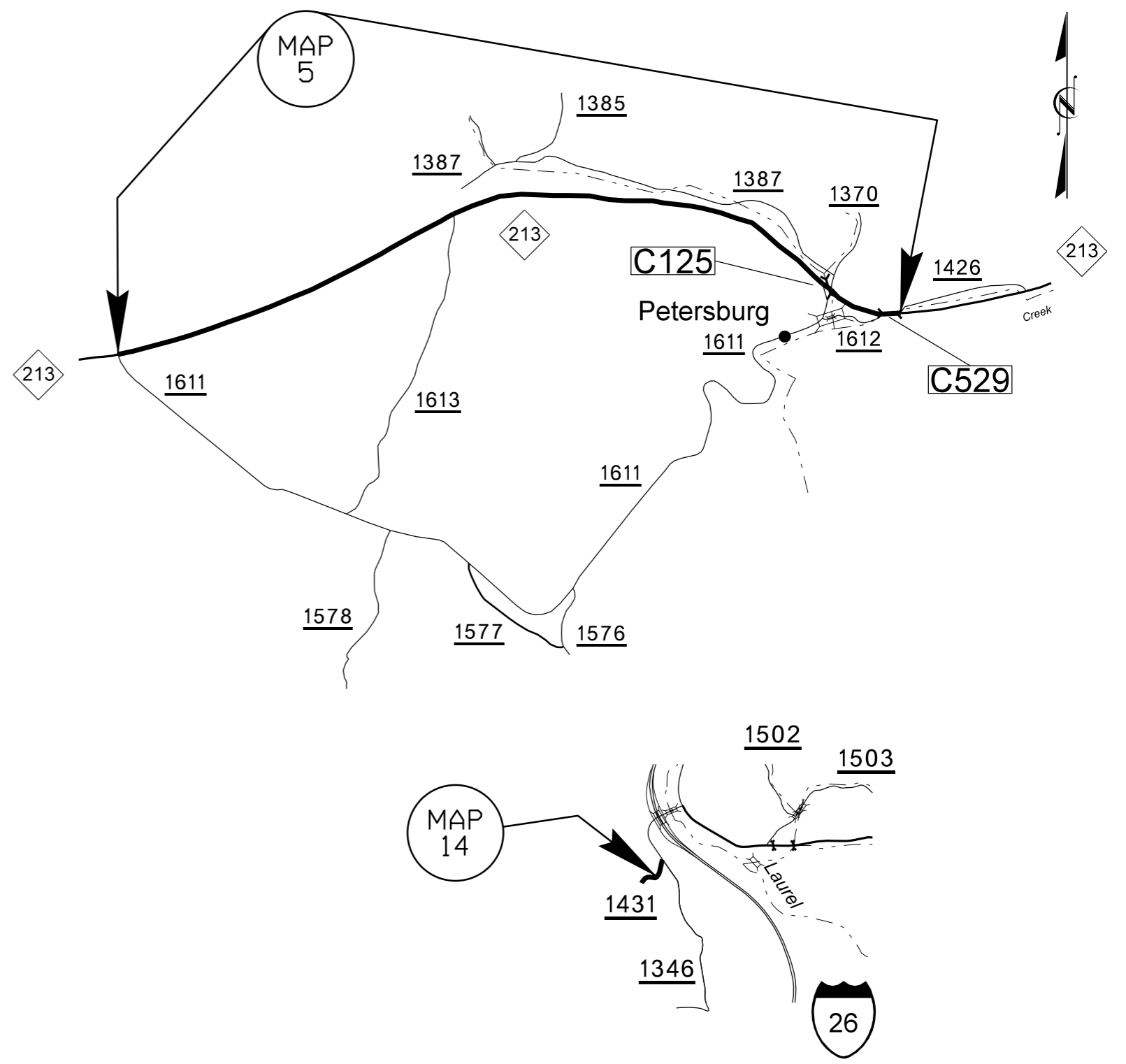
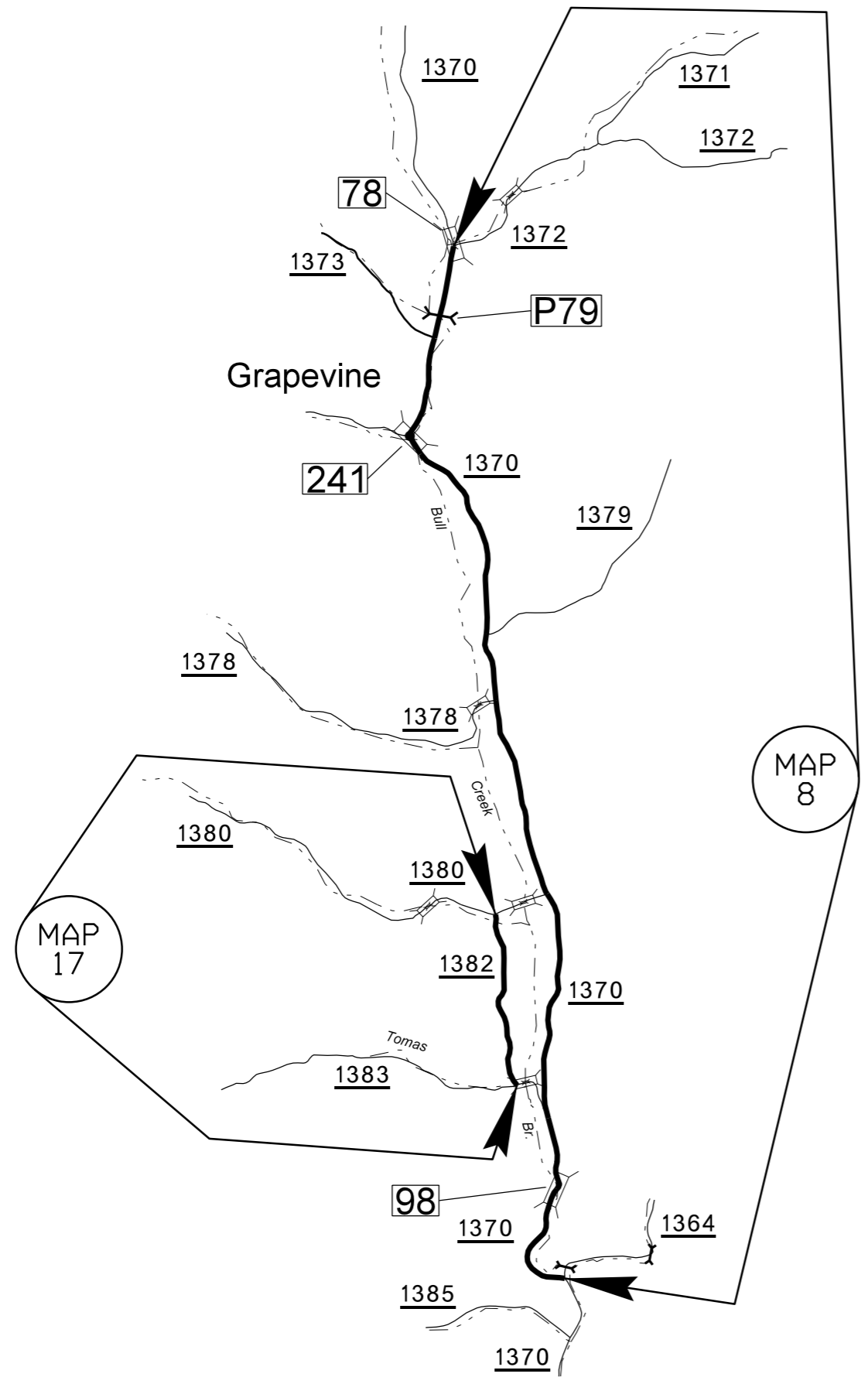
PROJECT NO.	SHEET NO.	TOTAL SHEETS
2017CPT.13.03.10571, 2017CPT.13.03.20571, 2017CPT.13.03.20572, ETC.	1	18



BUNCOMBE COUNTY

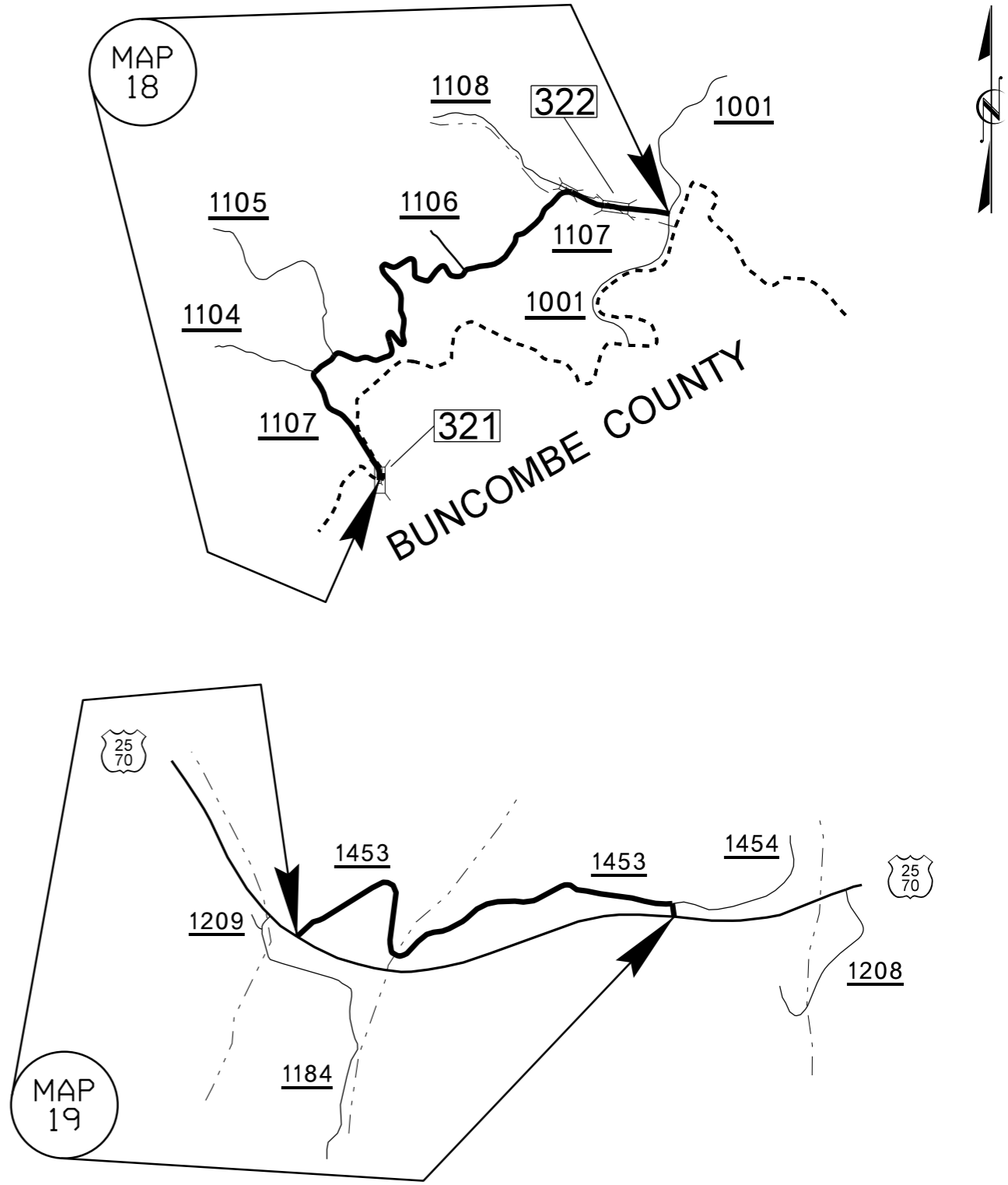
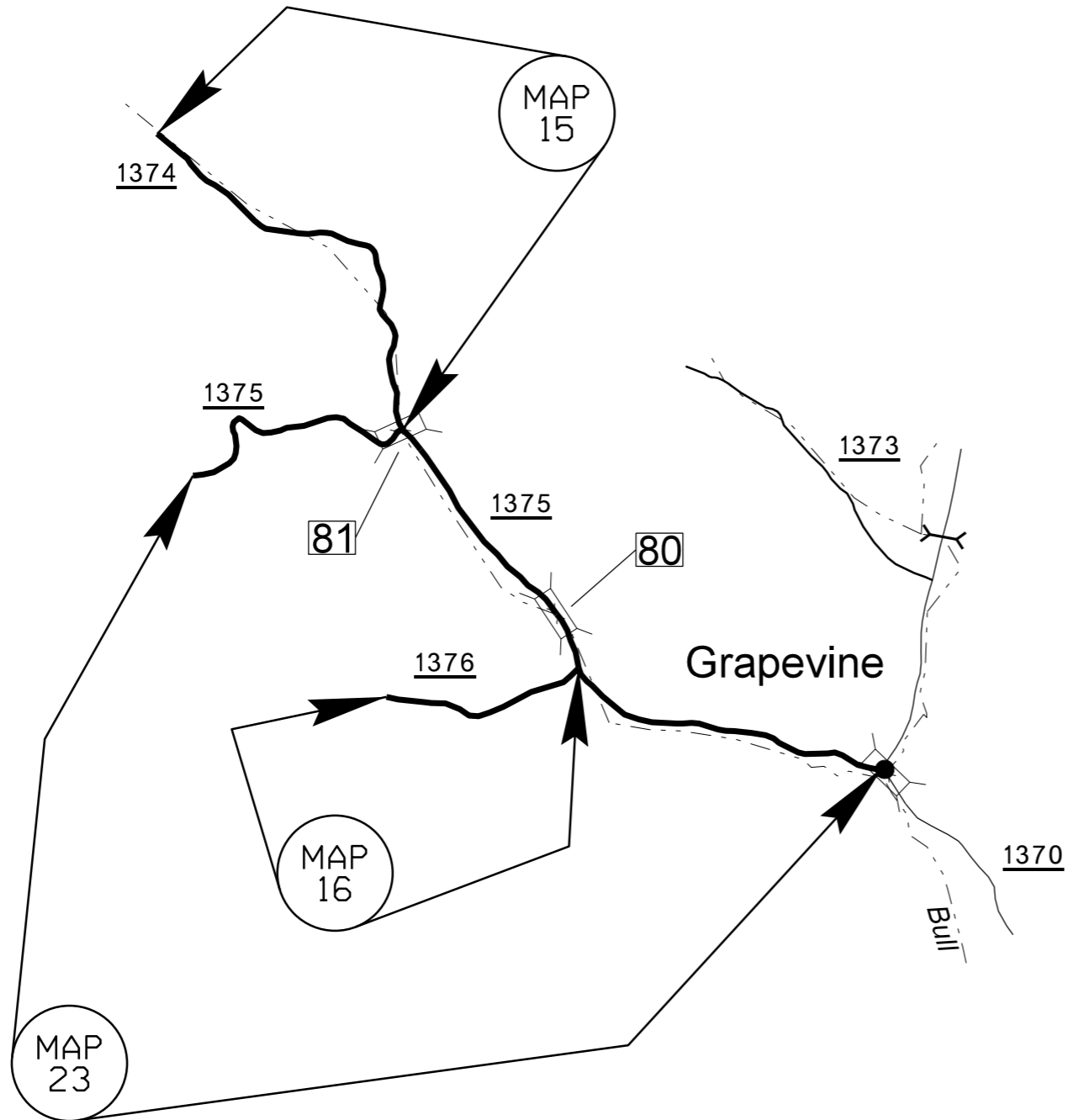
MADISON COUNTY

PROJECT NO.	SHEET NO.	TOTAL SHEETS
2017CPT.13.03.10571, 2017CPT.13.03.20571, 2017CPT.13.03.20572, ETC.	2	18



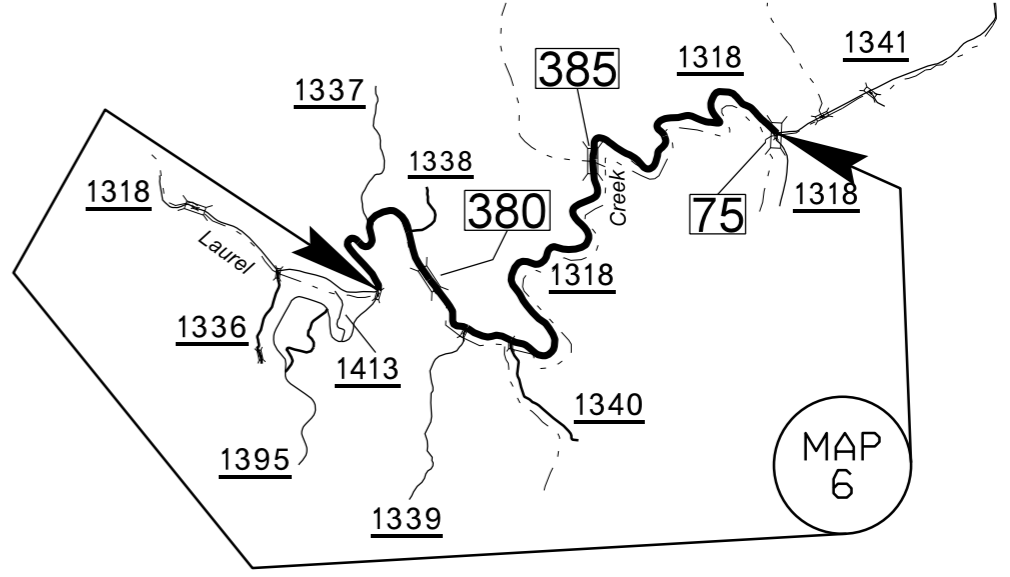
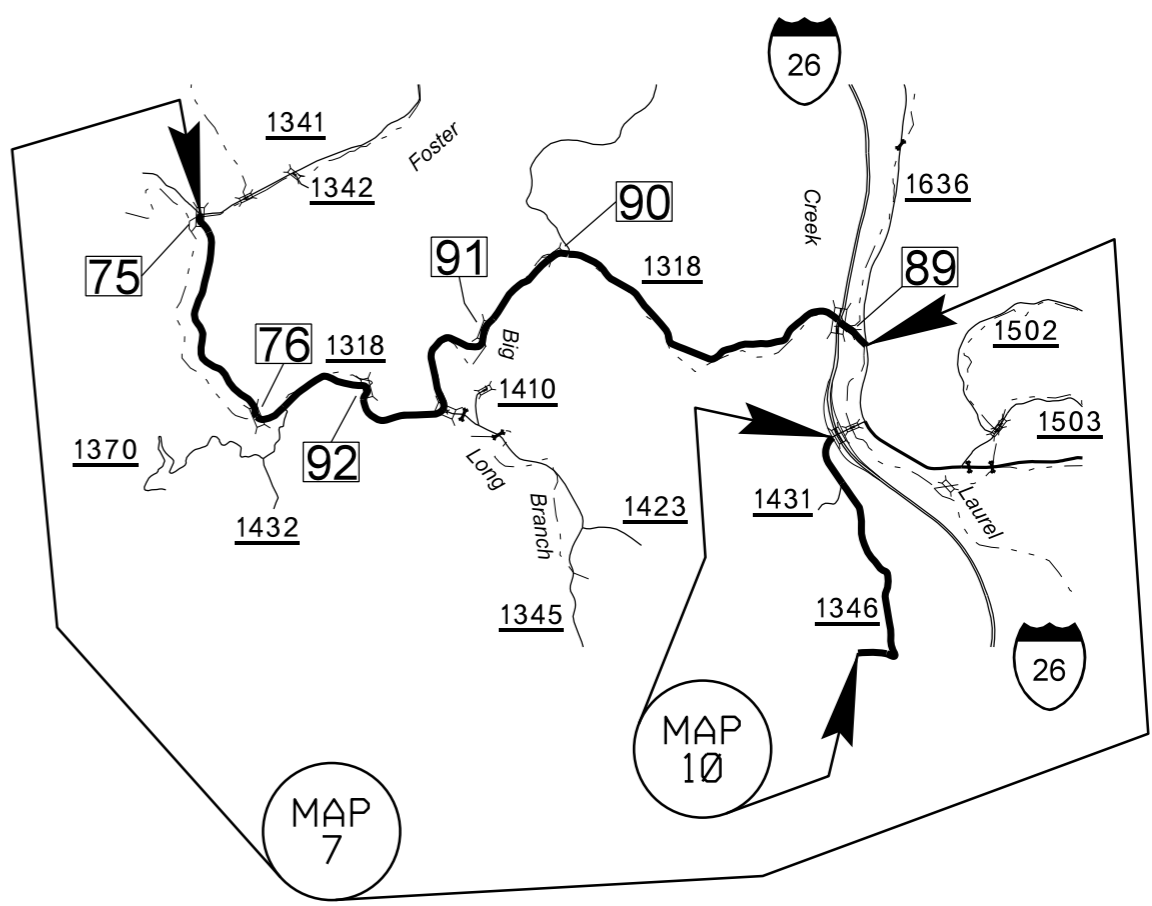
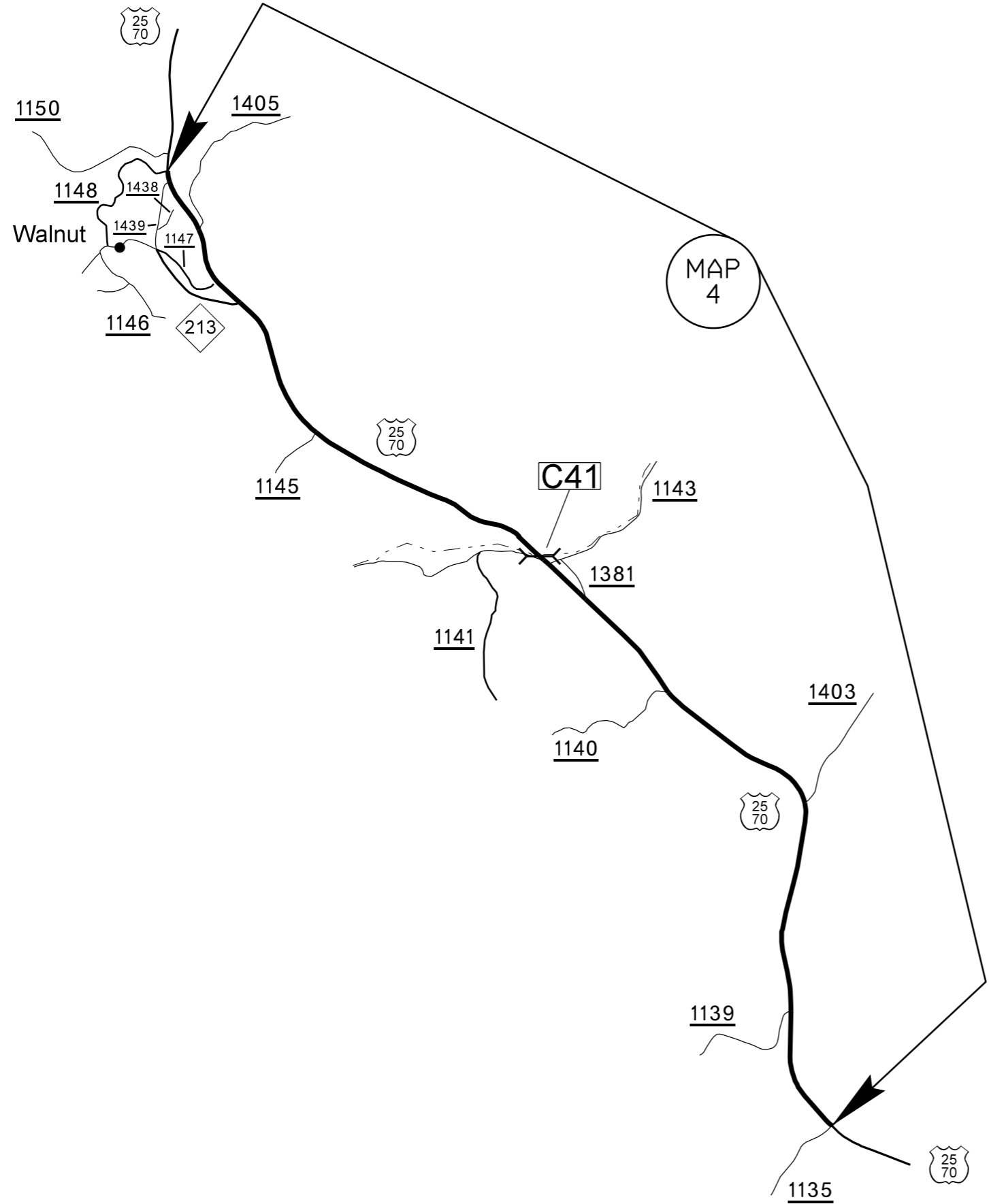
MADISON COUNTY

PROJECT NO.	SHEET NO.	TOTAL SHEETS
2017CPT.13.03.10571, 2017CPT.13.03.20571, 2017CPT.13.03.20572, ETC.	3	18



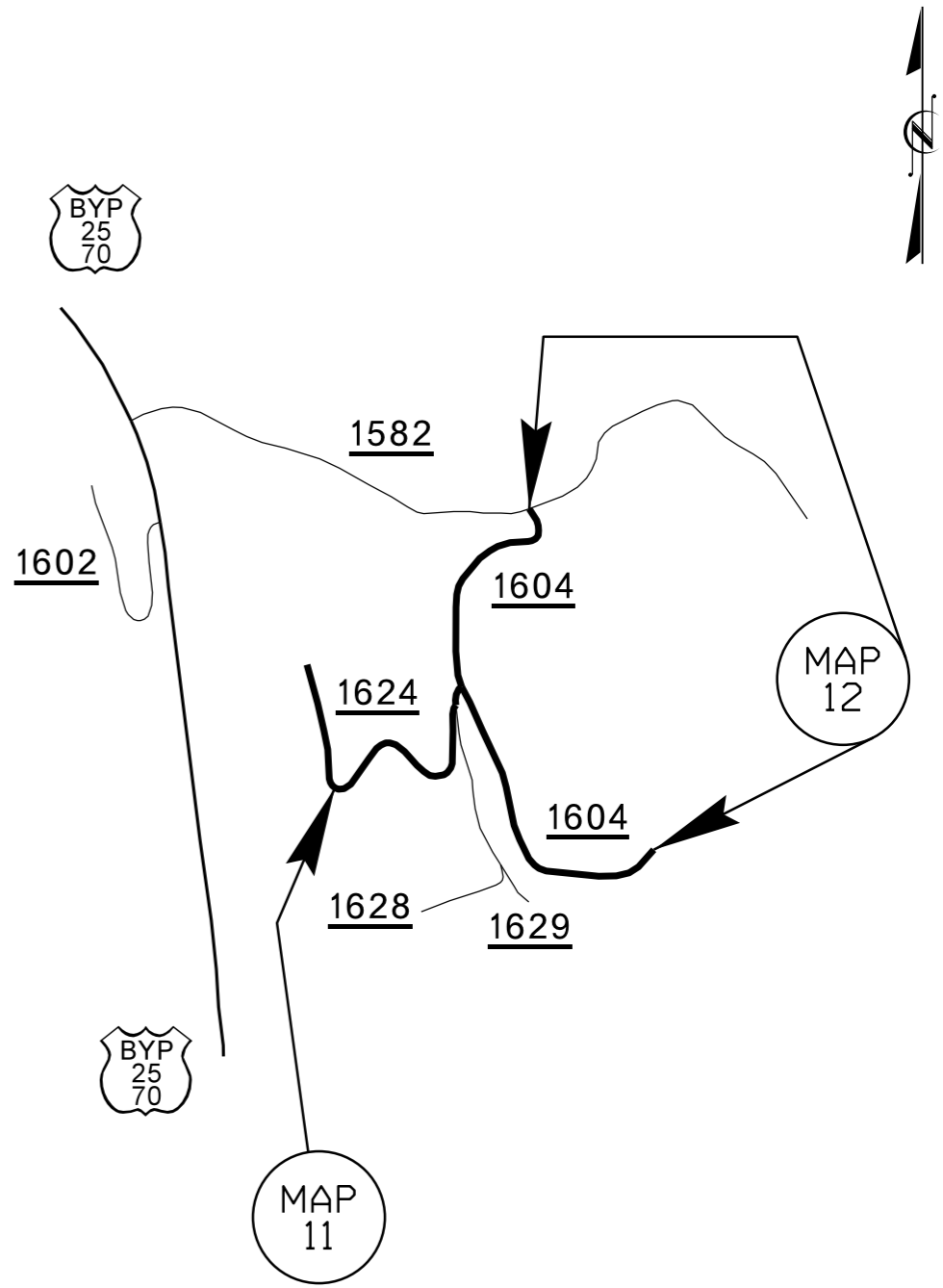
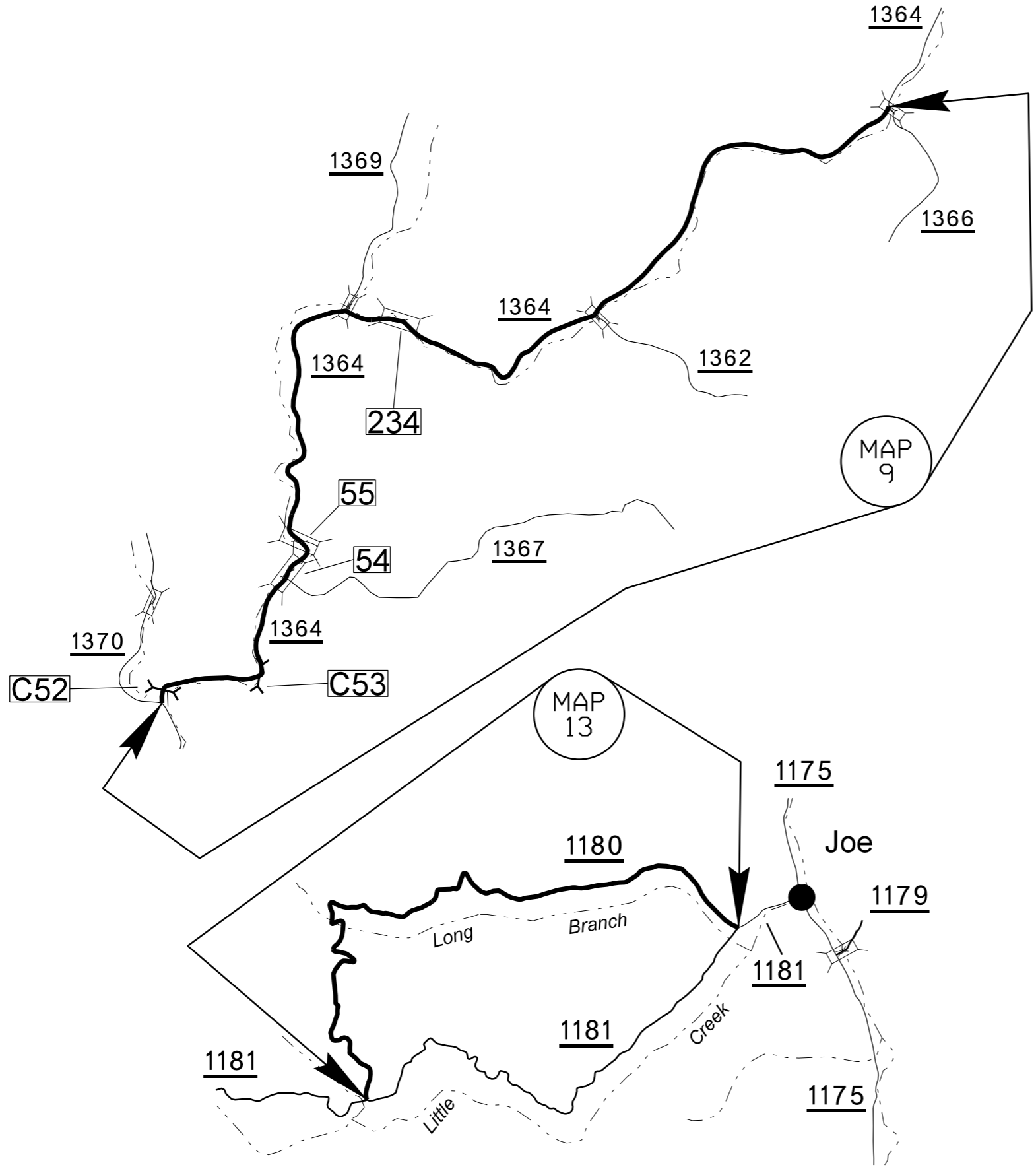
MADISON COUNTY

PROJECT NO.	SHEET NO.	TOTAL SHEETS
2017CPT.13.03.10571, 2017CPT.13.03.20571, 2017CPT.13.03.20572, ETC.	4	18



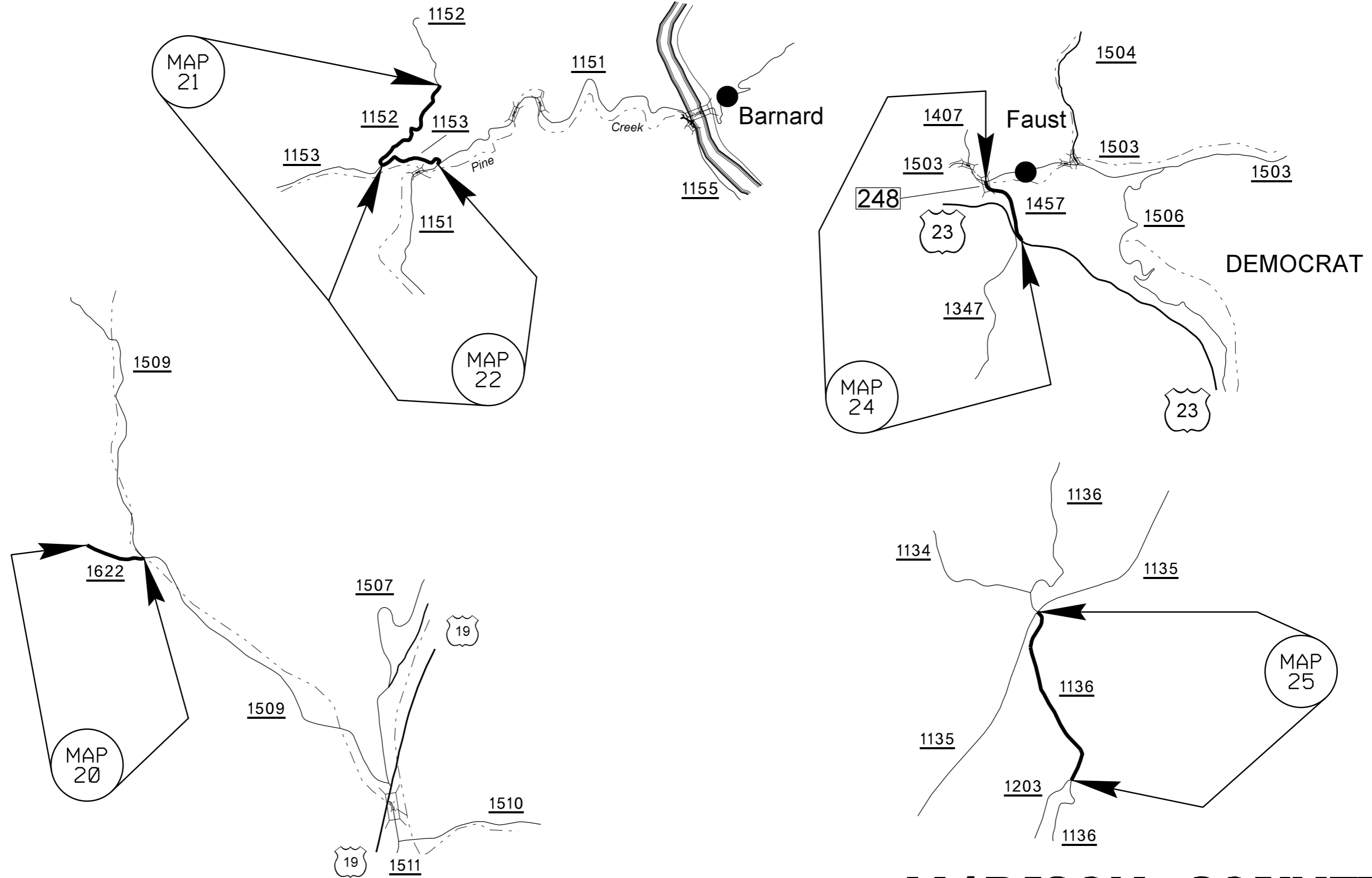
MADISON COUNTY

PROJECT NO.	SHEET NO.	TOTAL SHEETS
2017CPT.13.03.10571, 2017CPT.13.03.20571, 2017CPT.13.03.20572, ETC.	5	18



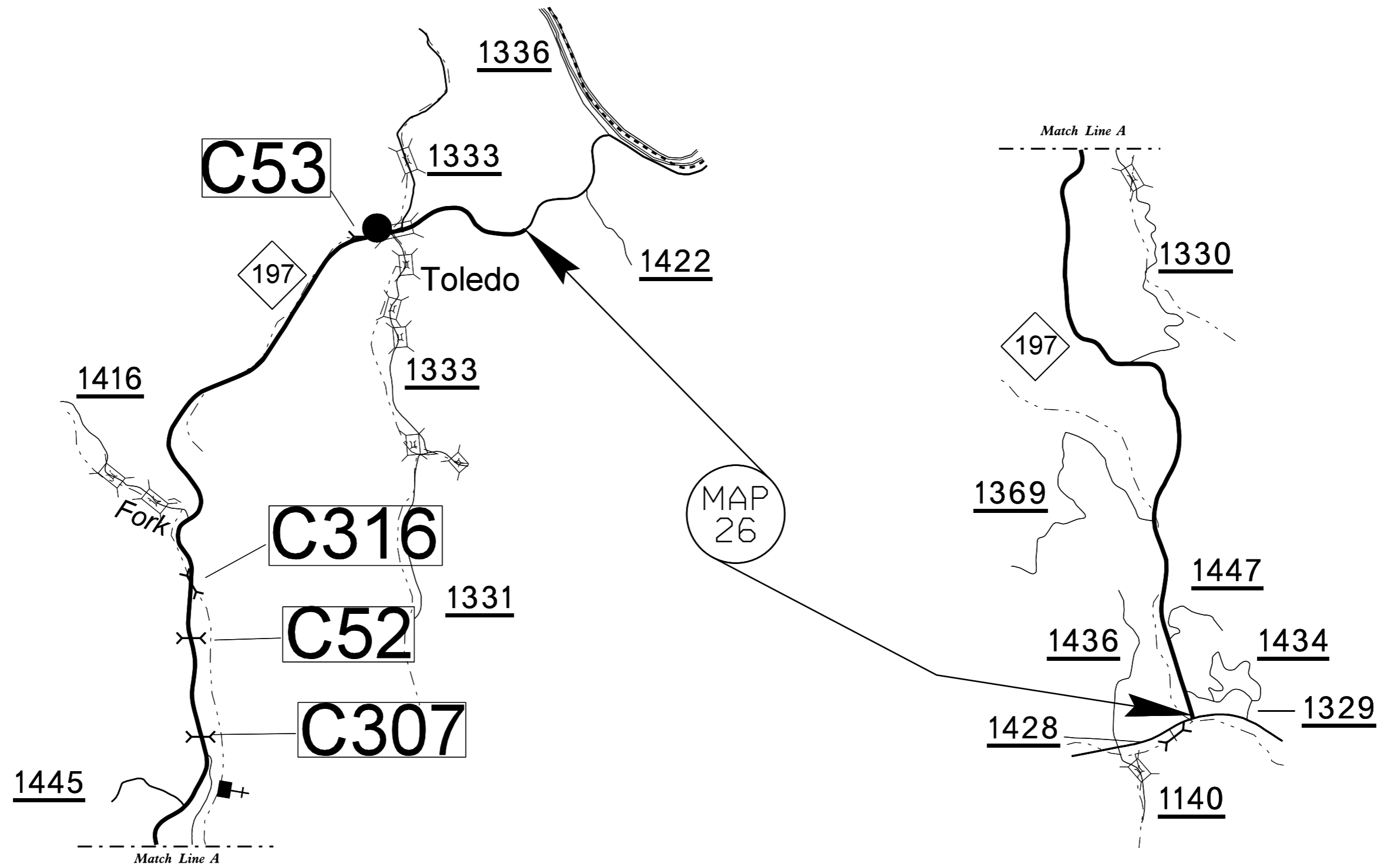
MADISON COUNTY

PROJECT NO.	SHEET NO.	TOTAL SHEETS
2017CPT.13.03.10571, 2017CPT.13.03.20571, 2017CPT.13.03.20572, ETC.	6	18



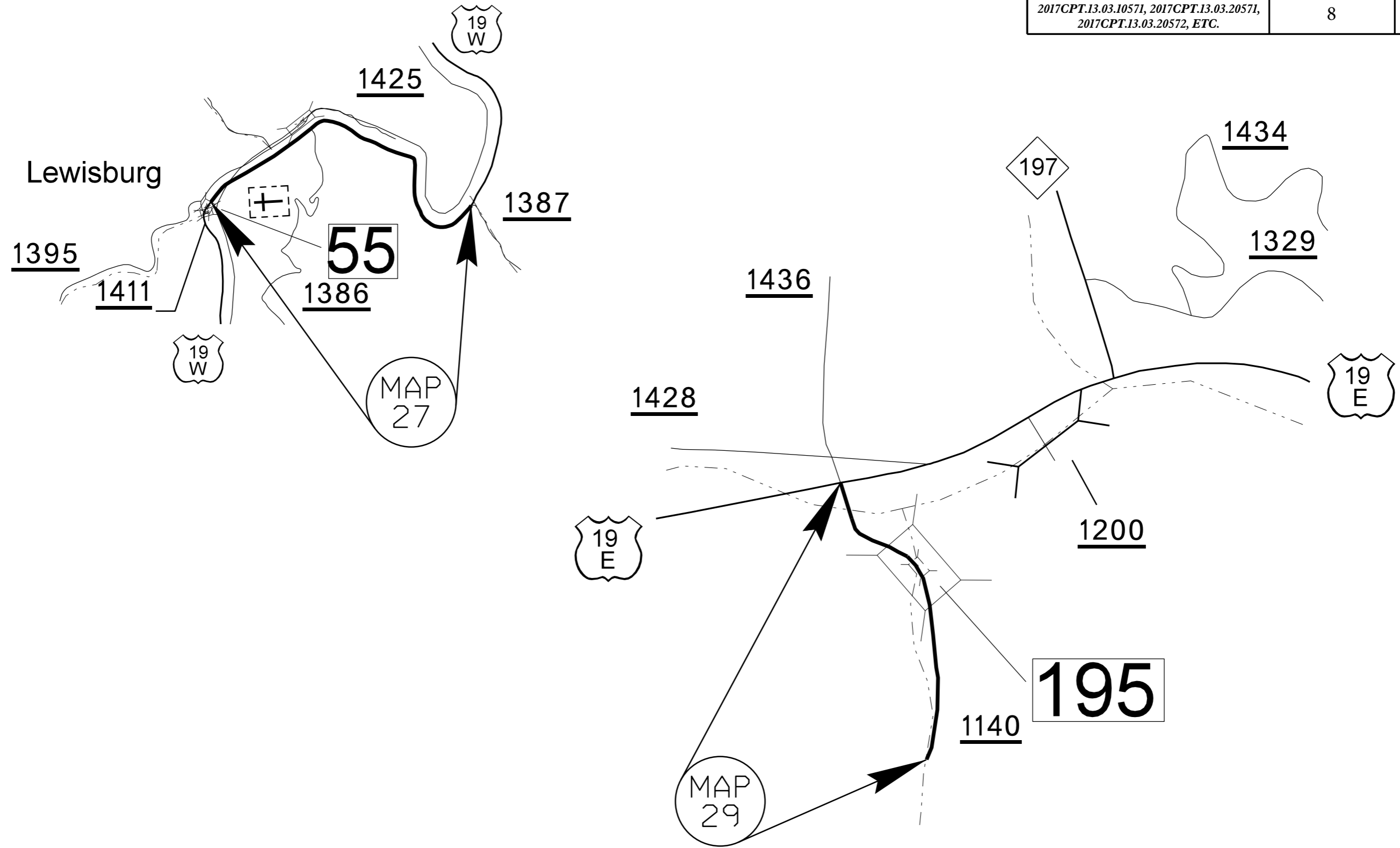
MADISON COUNTY

PROJECT NO.	SHEET NO.	TOTAL SHEETS
2017CPT.13.03.10571, 2017CPT.13.03.20571, 2017CPT.13.03.20572, ETC.	7	18



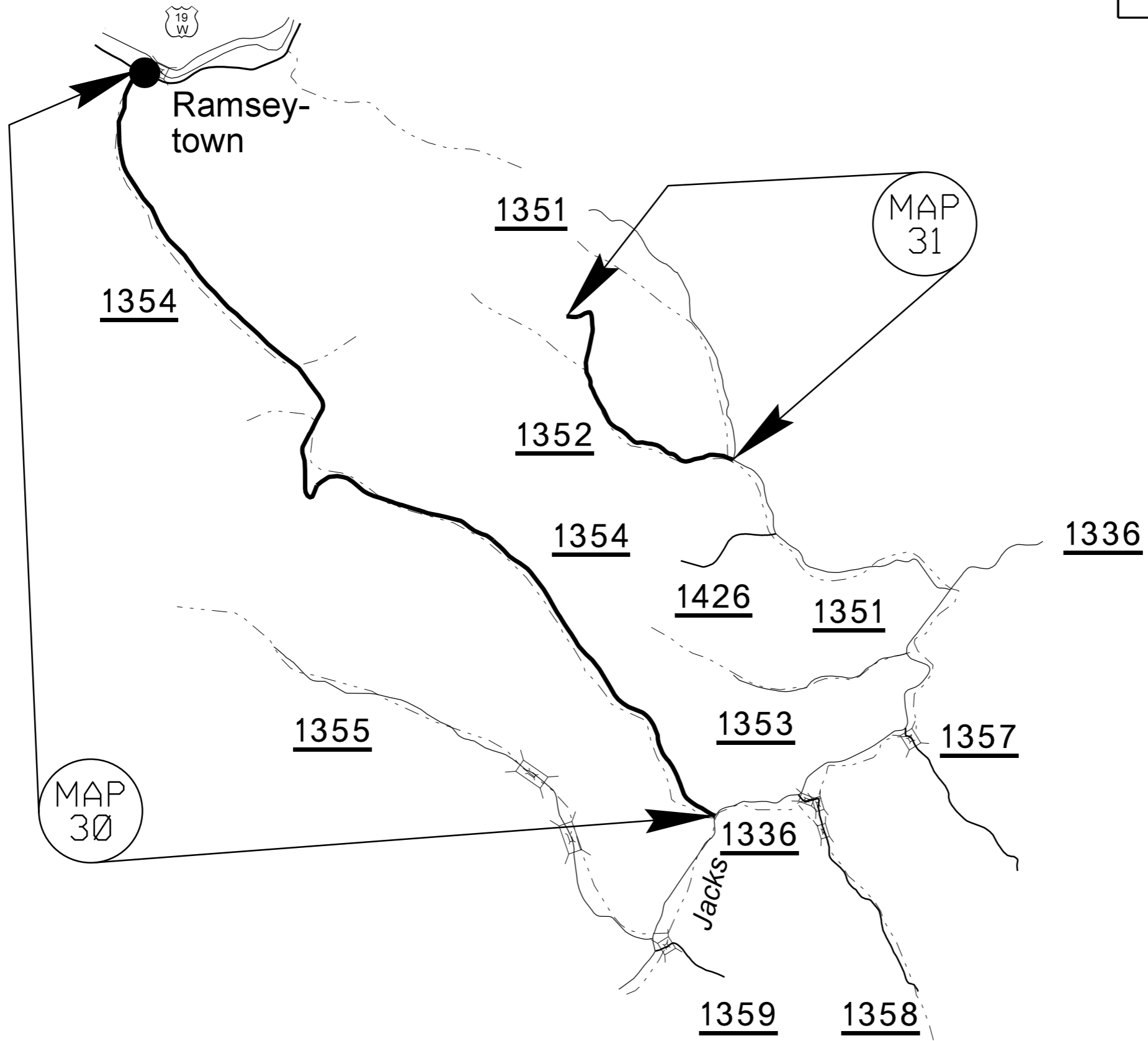
YANCEY COUNTY

PROJECT NO.	SHEET NO.	TOTAL SHEETS
2017CPT.13.03.10571, 2017CPT.13.03.20571, 2017CPT.13.03.20572, ETC.	8	18



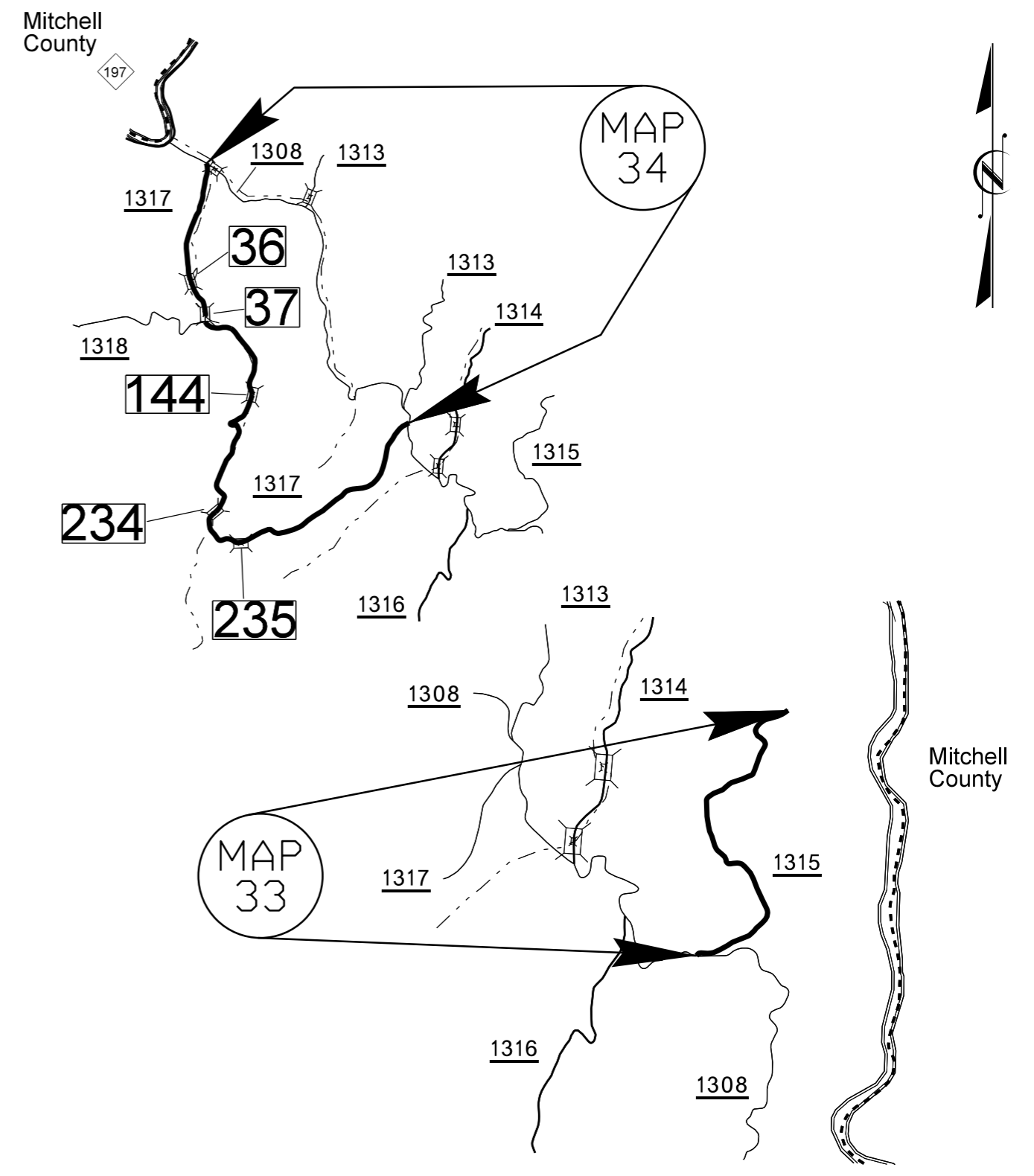
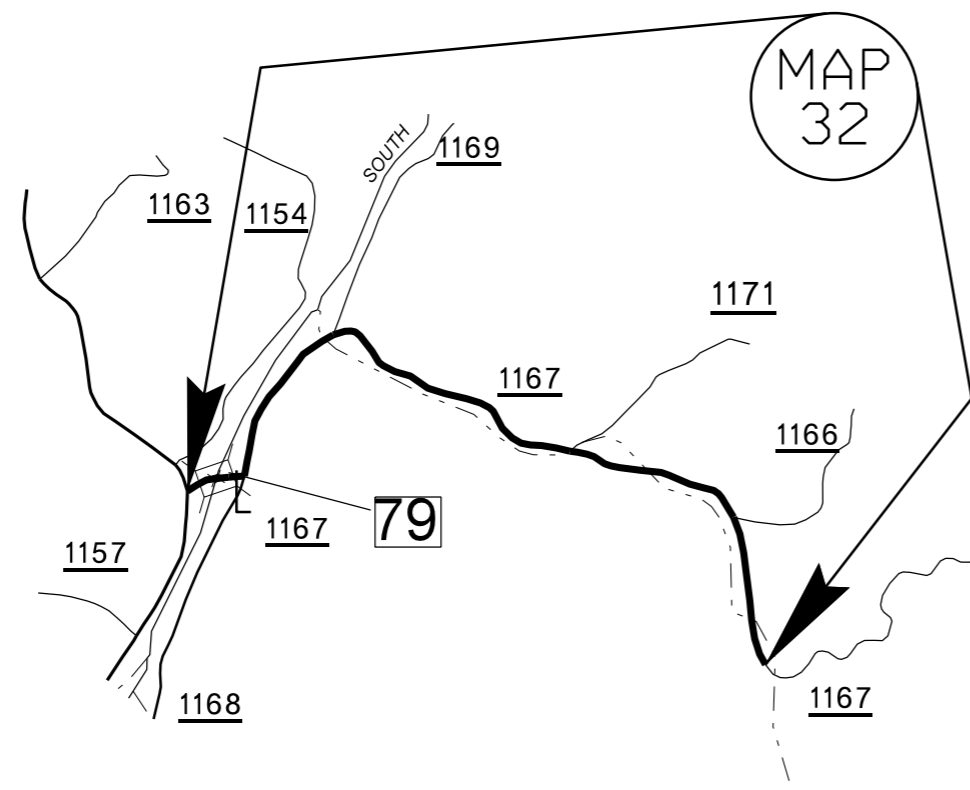
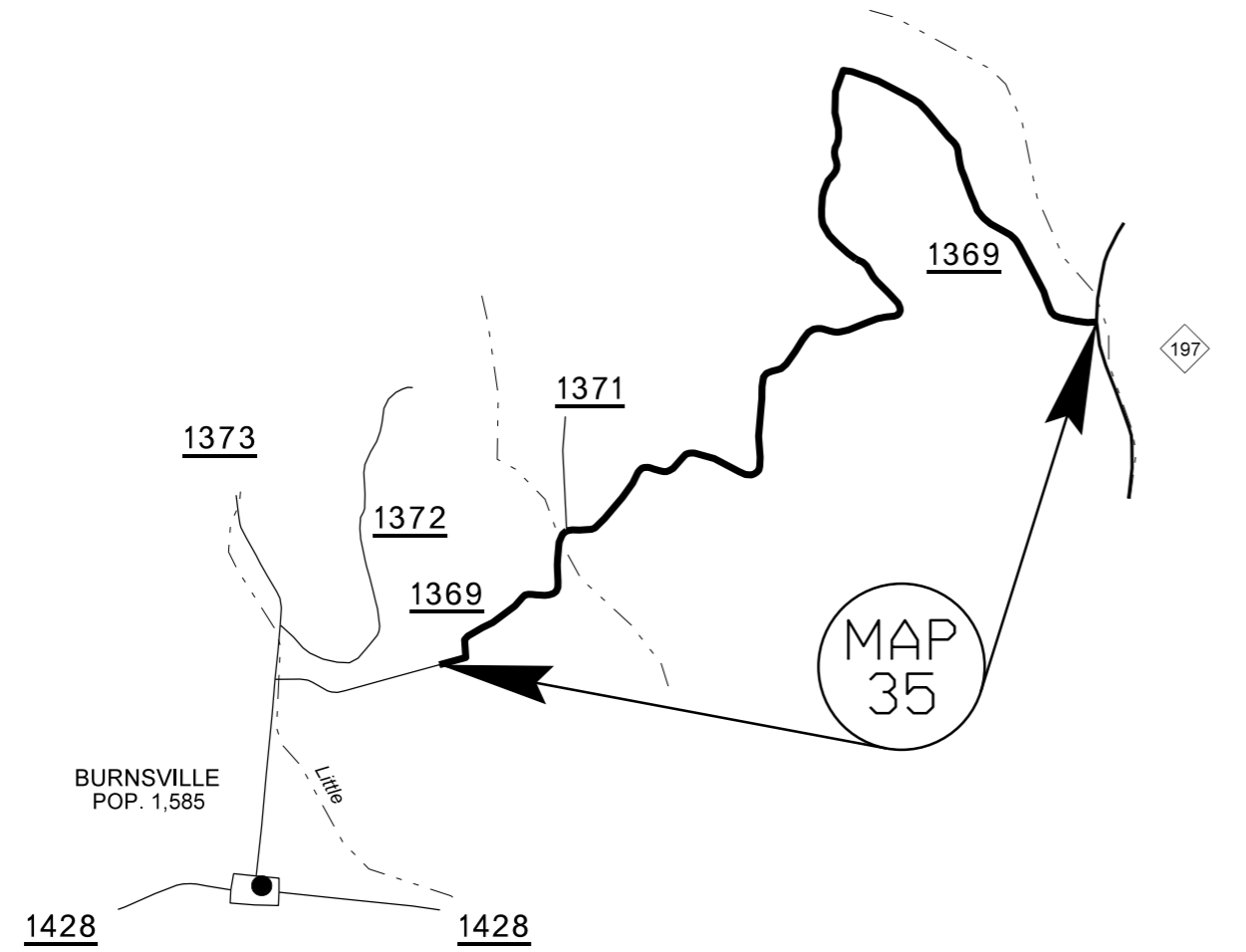
YANCEY COUNTY

PROJECT NO.	SHEET NO.	TOTAL SHEETS
2017CPT.13.03.10571, 2017CPT.13.03.20571, 2017CPT.13.03.20572, ETC.	9	18



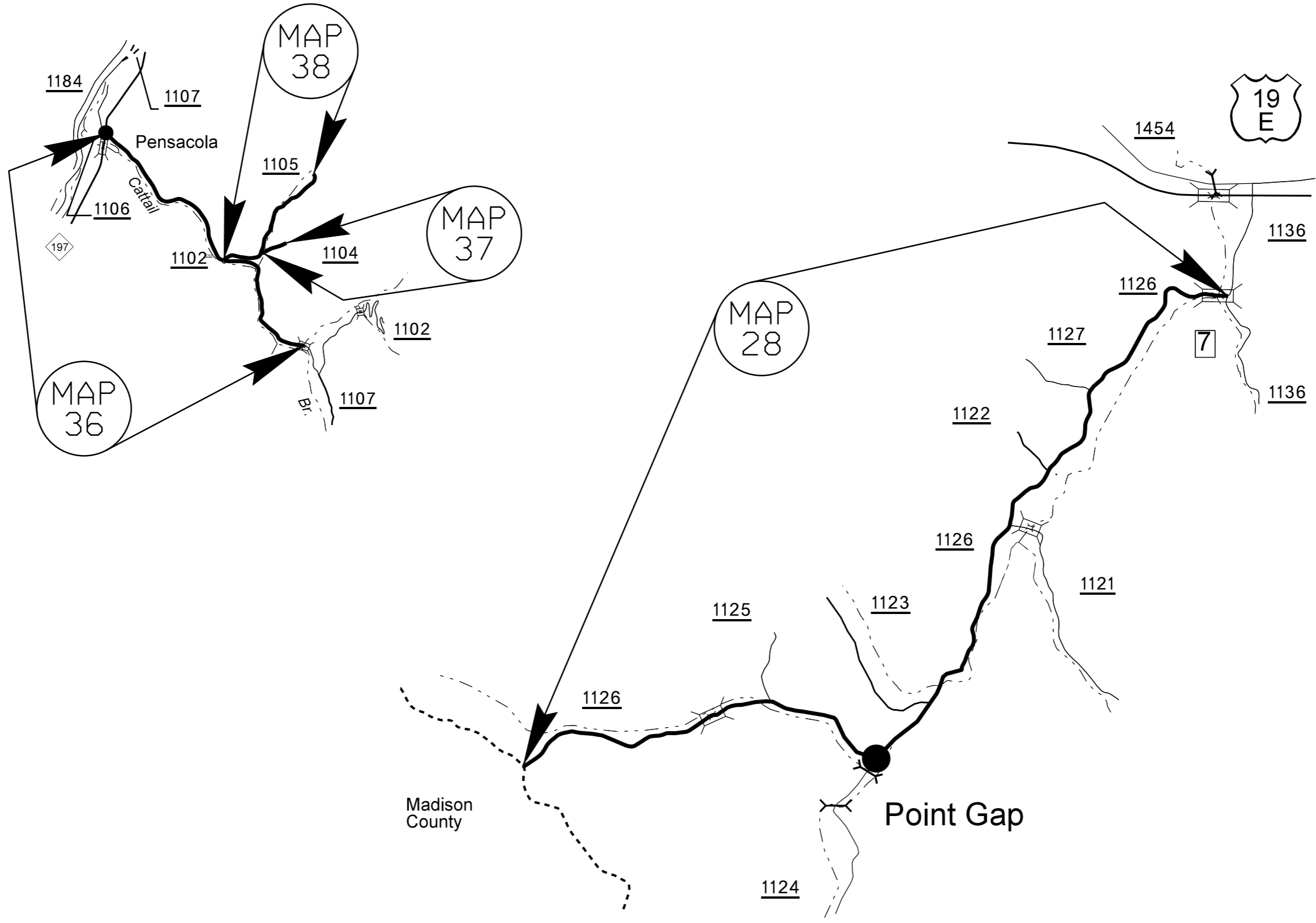
YANCEY COUNTY

PROJECT NO.	SHEET NO.	TOTAL SHEETS
2017CPT.13.03.10571, 2017CPT.13.03.20571, 2017CPT.13.03.20572, ETC.	10	18



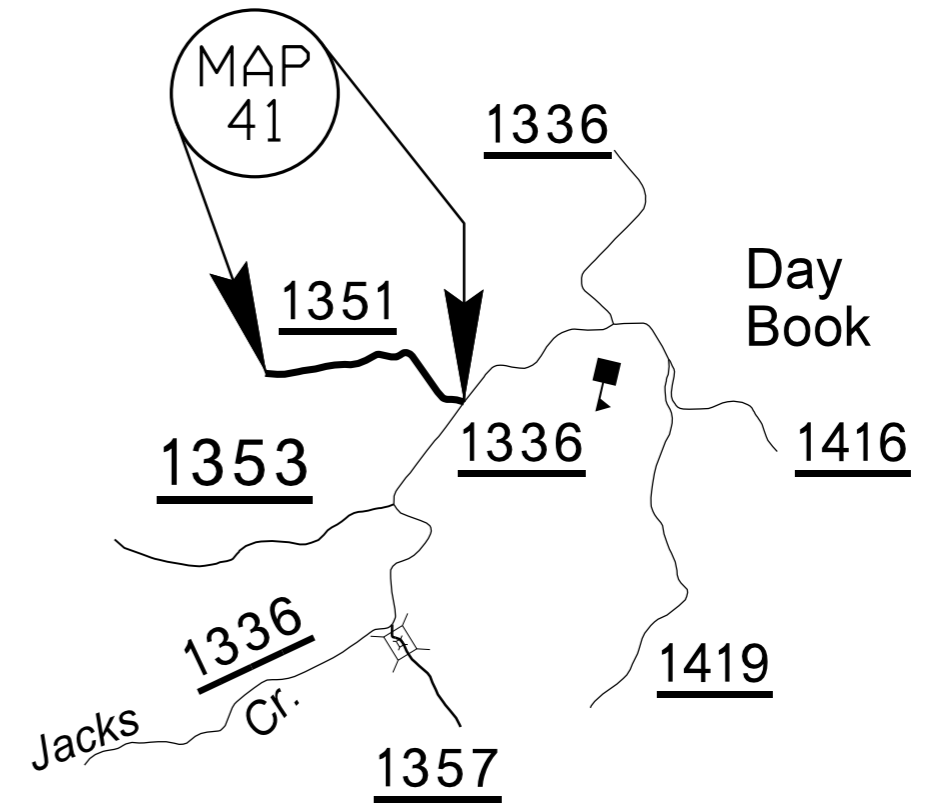
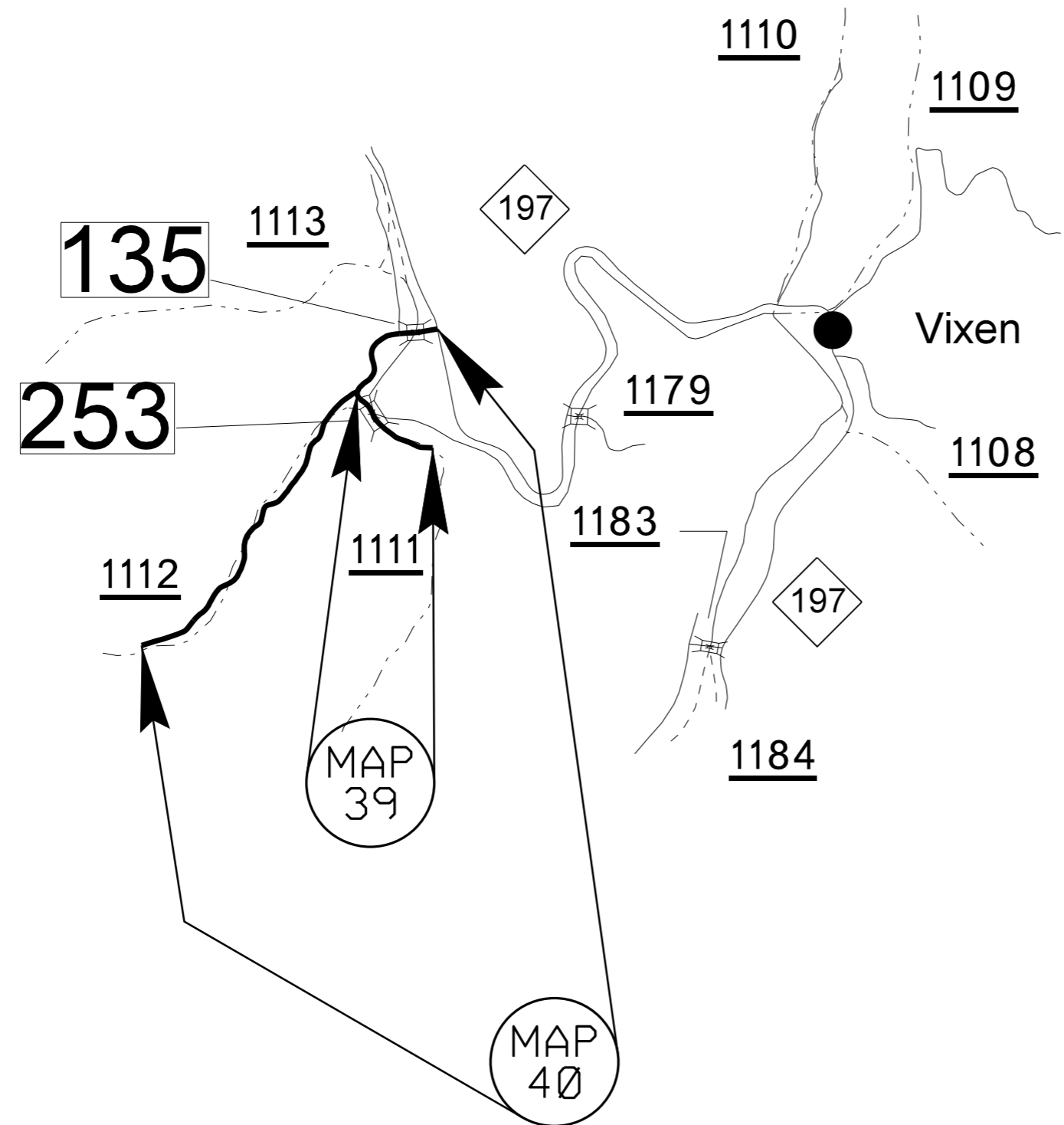
YANCEY COUNTY

PROJECT NO.	SHEET NO.	TOTAL SHEETS
2017CPT.13.03.10571, 2017CPT.13.03.20571, 2017CPT.13.03.20572, ETC.	11	18



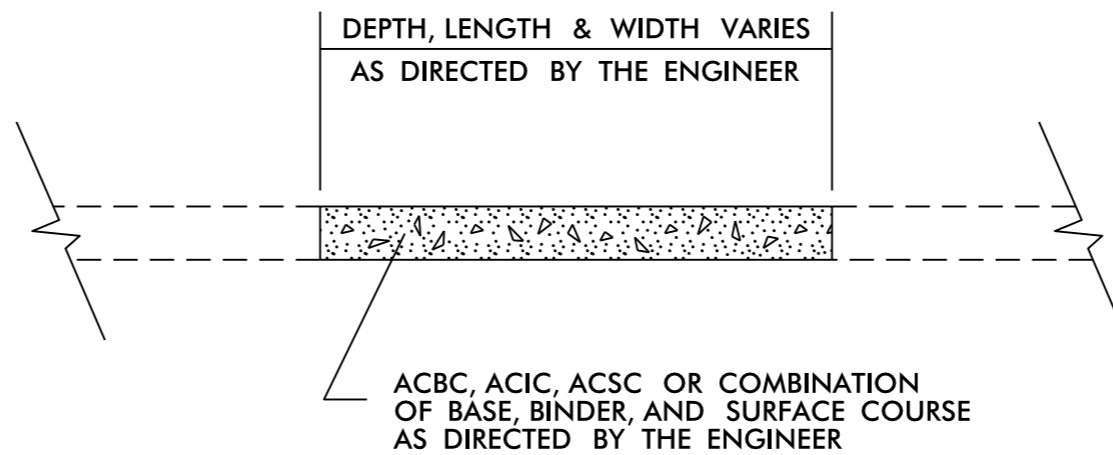
YANCEY COUNTY

PROJECT NO.	SHEET NO.	TOTAL SHEETS
2017CPT.13.03.10571, 2017CPT.13.03.20571, 2017CPT.13.03.20572, ETC.	12	18



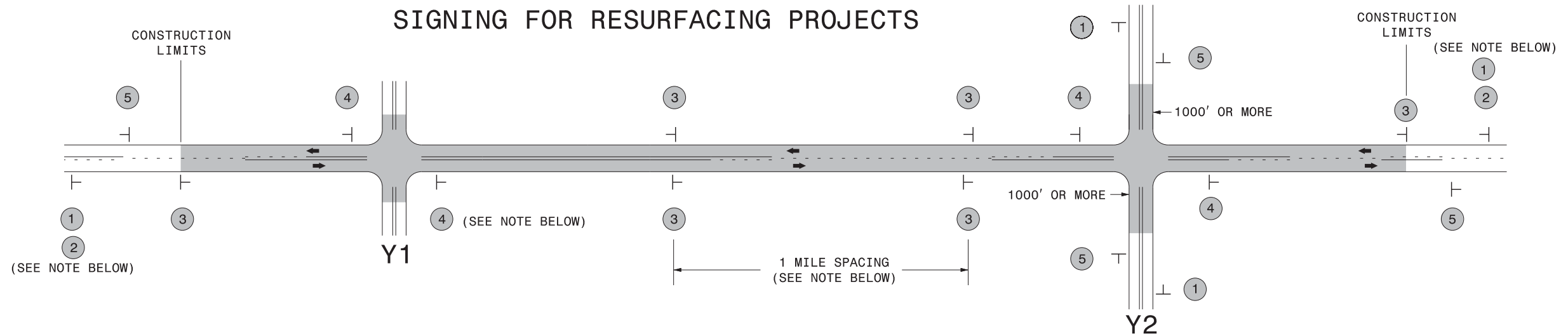
YANCEY COUNTY

<i>PROJECT NO.</i>	<i>SHEET NO.</i>	<i>TOTAL SHEETS</i>
<i>2017CPT.13.03.10571, 2017CPT.13.03.20571, 2017CPT.13.03.20572, ETC.</i>	13	18



DETAIL FOR PATCHING EXISTING PAVEMENT

SIGNING FOR RESURFACING PROJECTS



LEGEND	
	STATIONARY SIGN
←	DIRECTION OF TRAFFIC FLOW

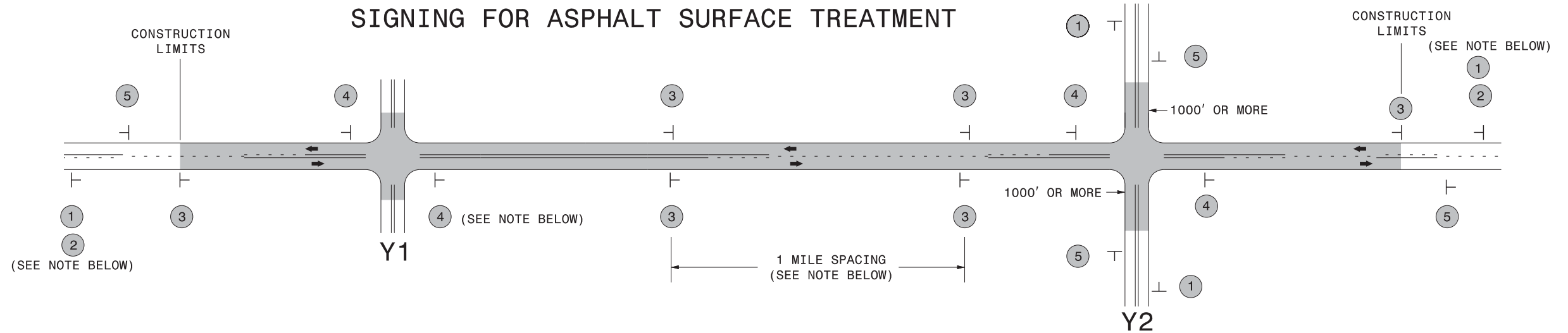
MAINLINE (-L-) SIGNING

-Y- LINE SIGNING

SIGNING NOTES AND PLACEMENT PER DIRECTION	MAINLINE (-L-) SIGNING		-Y- LINE SIGNING	
	1	 <small>W20-1 48" X 48"</small>	<p>PLACE 1000' PRIOR TO BEGINNING OF CONSTRUCTION LIMITS. ONLY USED ON -Y- LINES IF RESURFACING LIMITS EXTEND 1000' ALONG -Y- LINE.</p>	<p style="text-align: center;">NO REQUIRED STATIONARY SIGNING FOR THE FOLLOWING -Y- LINE CONDITIONS:</p> <ol style="list-style-type: none"> 1) LESS THAN 1000' OF RESURFACING ALONG -Y- LINE 2) SUBDIVISION ROADS 3) DEAD END ROADS <p>WHEN PAVING/CONSTRUCTION ACTIVITIES PROCEED ACROSS AN UNSIGNED -Y- LINE, ADVANCE WARNING PORTABLE SIGNS SHALL BE USED ALONG THE -Y- LINE AS SHOWN BELOW. REMOVE UPON COMPLETION OF WORK.</p> <div style="display: flex; justify-content: space-around; align-items: center;"> <div style="text-align: center;"> <small>W20-1 48" X 48"</small> </div> <div style="text-align: center;"> <small>W20-7 A 48" X 48"</small> </div> </div> <p>PLACED 500' IN ADVANCE OF FLAGGER. PLACED 250' IN ADVANCE OF FLAGGER.</p>
	2	 <small>W7-3aP 24" X 18"</small>	<p>#2 SIGN ONLY USED WHEN RESURFACING LIMITS ARE 2 OR MORE MILES IN LENGTH. ROUND UP TO NEXT WHOLE NUMBER. (NO FRACTIONAL OR DECIMAL NUMBERS)</p>	
	3	 <small>SP 13107 48" X 48"</small>	<p>PLACE INITIALLY AT THE CONSTRUCTION LIMITS AND SPACED 1 MILE APART THEREAFTER. IF NO -Y- LINES EXIST, PLACE 2ND SET 1/2 MILE FROM THE CONSTRUCTION LIMITS AND THEN SPACE 1 MILE THEREAFTER.</p>	
	4	 <small>SP 13106 48" X 48"</small>	<p>THESE ARE FOR -Y- LINES THAT ARE "THROUGH" ROADWAYS. DEAD END AND SUBDIVISION ROADS ARE NOT "THROUGH" ROADWAYS. INSTALL 500' +/- FROM EACH -Y- LINE APPROACH AS SHOWN ABOVE. FOR MULTIPLE -Y- LINES THAT ARE SEPARATED BY 0.25 MILES OR LESS, TREAT AS A SINGLE UNIT AND INSTALL WITHIN 500' OF EACH APPROACH. A MAXIMUM OF 2 SIGN SETS PER MILE. DO NOT INSTALL WHEN -Y- LINES ARE WITHIN 0.5 MILES FROM "END ROAD WORK" SIGN.</p>	
5	 <small>G20-2 A 48" X 24"</small>	<p>PLACE 500' FOLLOWING THE END OF CONSTRUCTION LIMITS.</p>		

**RESURFACING
ADVANCE WARNING SIGNS
FOR
RURAL AND SUBURBAN
2 LANE ROADWAYS**

3/19/2015
C:\Users\rmgarrett\Downloads\Resurfacing_AdvWarn_2Ln (2).dgn
User:rmgarrett



LEGEND	
T	STATIONARY SIGN
←	DIRECTION OF TRAFFIC FLOW

MAINLINE (-L-) SIGNING

-Y- LINE SIGNING

SIGNING NOTES AND PLACEMENT PER DIRECTION	1	<p>PLACE 1000' PRIOR TO BEGINNING OF CONSTRUCTION LIMITS. ONLY USED ON -Y- LINES IF RESURFACING LIMITS EXTEND 1000' ALONG -Y- LINE.</p>
	2	<p>#2 SIGN ONLY USED WHEN RESURFACING LIMITS ARE 2 OR MORE MILES IN LENGTH. ROUND UP TO NEXT WHOLE NUMBER. (NO FRACTIONAL OR DECIMAL NUMBERS)</p>
	3	<p>ALTERNATE THE FOLLOWING TWO SIGNS: STARTING WITH "LOOSE GRAVEL" (W8-7) FOLLOWED BY "UNMARKED PAVEMENT".</p> <p>PLACE INITIALLY AT THE CONSTRUCTION LIMITS AND SPACED 1 MILE APART THEREAFTER. IF NO -Y- LINES EXIST, PLACE 2ND SET 1/2 MILE FROM THE CONSTRUCTION LIMITS AND THEN SPACE 1 MILE THEREAFTER.</p>
	4	<p>THESE ARE FOR -Y- LINES THAT ARE "THROUGH" ROADWAYS. DEAD END AND SUBDIVISION ROADS ARE NOT "THROUGH" ROADWAYS. INSTALL 500' +/- FROM EACH -Y- LINE APPROACH AS SHOWN ABOVE. FOR MULTIPLE -Y- LINES THAT ARE SEPARATED BY 0.25 MILES OR LESS, TREAT AS A SINGLE UNIT AND INSTALL WITHIN 500' OF EACH APPROACH. A MAXIMUM OF 2 SIGN SETS PER MILE. DO NOT INSTALL WHEN -Y- LINES ARE WITHIN 0.5 MILES FROM "END ROAD WORK" SIGN.</p>
	5	<p>PLACE 500' FOLLOWING THE END OF CONSTRUCTION LIMITS.</p>

NO REQUIRED STATIONARY SIGNING FOR THE FOLLOWING -Y- LINE CONDITIONS:

- 1) LESS THAN 1000' OF RESURFACING ALONG -Y- LINE
- 2) SUBDIVISION ROADS
- 3) DEAD END ROADS

WHEN PAVING/CONSTRUCTION ACTIVITIES PROCEED ACROSS AN UNSIGNED -Y- LINE, ADVANCE WARNING PORTABLE SIGNS SHALL BE USED ALONG THE -Y- LINE AS SHOWN BELOW. REMOVE UPON COMPLETION OF WORK.



PLACED 500' IN ADVANCE OF FLAGGER. PLACED 250' IN ADVANCE OF FLAGGER.



ADVANCE WARNING SIGNS
FOR
ASPHALT SURFACE TREATMENTS
2 LANE ROADWAYS

SIGN NUMBER: 11299
 TYPE: B
 QUANTITY: SEE PLANS

BACKG COLOR: Fluorescent Orange
 COPY COLOR: Black

DESIGN BY: WJ
 PROJECT ID: ALL

CHECKED BY:
 DIV: ALL

DATE: Jun 22, 2011

SIGN WIDTH: 5'-6"
 HEIGHT: 5'-6"
 TOTAL AREA: 30.5 Sq.Ft.

BORDER TYPE: INSET
 RECESS: 0.59"
 WIDTH: 0.75"
 RADII: 1.38"

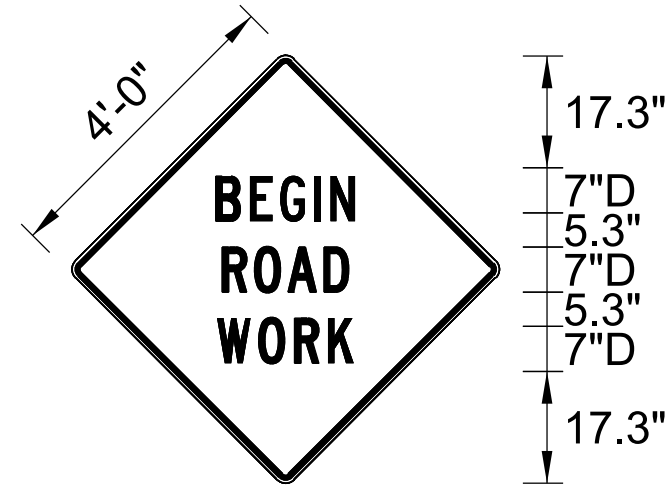
NO. Z BARS: N/A
 LENGTH: N/A

SYMBOL	X	Y	WID	HT

MAT'L: 0.125" (3.2 mm) ALUMINUM

SP 11299

PROJECT NO.	SHEET NO.	TOTAL NO.
2017CPT.13.03.10571, 2017CPT.13.03.20571, 2017CPT.13.03.20572, ETC.	16	18



BORDER
 R=1.38"
 TH=0.75"
 IN=0.59"

Spacing Factor is 1 unless specified otherwise

USE NOTES: 1,2

1. Legend and border shall be direct applied black non-reflective sheeting.
2. Background shall be Type VII, VIII, or IX (prismatic) fluorescent orange retroreflective sheeting.

LETTER POSITIONS

Letter spacings are to start of next letter

Series/Size
 Text Length

Letter spacings are to start of next letter																	Series/Size Text Length	
		B	E	G	I	N												D 2000
20.5	6	5.4	6.3	2.8	4.8	20.5												25.2
		R	O	A	D													D 2000
21.4	5.8	5.9	7	4.8	21.4													23.5
		W	O	R	K													D 2000
20.9	7.1	6.5	5.9	4.9	20.9													24.5

SIGN NUMBER: SP13106
 TYPE: STATIONARY
 QUANTITY: SEE PLANS

BACKG COLOR: Fluorescent Orange
 COPY COLOR: Black

DESIGN BY: B. RASHID
 PROJECT ID:

CHECKED BY: AIA
 DIV:

DATE: Apr 26, 2013

SYMBOL	X	Y	WID	HT

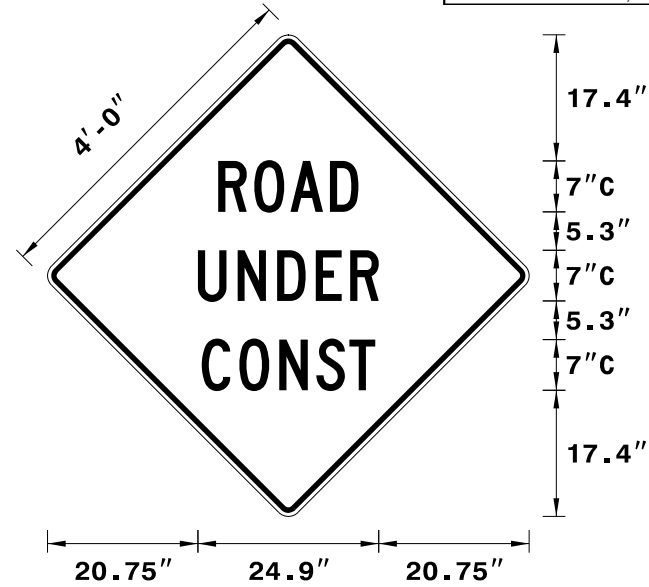
SIGN WIDTH: 4'-0"
 HEIGHT: 4'-0"
 TOTAL AREA: 16.00 Sq.Ft.

BORDER TYPE: INSET
 RECESS: 0.75"
 WIDTH: 1.25"
 RADII: 3"

NO. Z BARS:
 LENGTH:

MAT'L: 0.080" (2.0 mm) ALUMINUM

PROJECT NO.	SHEET NO.	TOTAL NO.
2017CPT.13.03.10571, 2017CPT.13.03.20571, 2017CPT.13.03.20572, ETC.	17	18



Spacing Factor is 1 unless specified otherwise

USE NOTES: 1,2

- Legend and border shall be direct applied black non-reflective sheeting.
- Background shall be NC GRADE B fluorescent orange retroreflective sheeting.

LETTER POSITIONS

Letter spacings are to start of next letter

Letter spacings are to start of next letter																	Series/Size Text Length	
		R	O	A	D													C 2000
	23.5	5	5	5.5	3.9	23.5												19.3
		U	N	D	E	R												C 2000
	20.7	5.5	5.5	5.3	4.8	3.9	20.7											24.9
		C	O	N	S	T												C 2000
	21.2	5.2	5.5	5.1	4.6	3.6	21.2											23.9

PROJECT NO.	SHEET NO.	TOTAL NO.
2017CPT.13.03.10571, 2017CPT.13.03.20571, 2017CPT.13.03.20572, ETC.	18	18

SUMMARY OF QUANTITIES

PROJECT NO	COUNTY	MAP NO	ROUTE	DESCRIPTION	LANES	LANE TYPE	FINAL SURFACE TESTING REQUIRED	WARM MIX ASPHALT REQUIRED	LENGTH MI	WIDTH FT	PATCHING EXISTING PAVEMENT TON	WORK ZONE ADVANCE/GENERAL WARNING SIGNING SF	TEMPORARY TRAFFIC CONTROL LS				
2017CPT.13.03.10571	Madison	1	NC 63	FROM 1.5 MILES WEST OF SR 1100 TO SR 1162 (MP 4.12 - MP 8.22)	2	2WU	NO	NO	4.1	20	625	1,382	*				
		2	US 25/70 BUS	FROM NC 251 TO PVMT CHANGE AT MARSHALL (MP 1.47 - MP 3.55)	2	2WU	NO	NO	2.08	20	250						
		3	NC 251	FROM BRIDGE NO. 5 8 & 9 TO US 25/70 (MP 4.10 - MP 4.91)	2	2WU	NO	NO	0.81	44	290						
		4	US 25/70	FROM SR 1135 TO SR 1439 (MP 7.34 - MP 10.76)	2	2WU	NO	NO	3.42	30	300						
		5	NC 213	FROM SR 1611 TO SR 1426 (MP 7.92 - MP 9.92)	2	2WU	NO	NO	2	42	300						
TOTAL FOR PROJ NO. 2017CPT.13.03.10571									12.41		1,765	1,382	1				
2017CPT.13.03.20571	Madison	6	SR 1318	FROM SR 1395 TO SR 1341 (MP 7.94 - MP 12.80)	2	2WU	NO	NO	4.86	18	580	2,405	*				
		7	SR 1318	FROM SR 1341 TO SR 1636 (MP 12.80 - MP 18.20)	2	2WU	NO	NO	5.4	20	520						
		8	SR 1370	FROM SR 1364 TO SR 1372 (MP 1.28 - MP 4.45)	2	2WU	NO	NO	3.17	18	400						
		9	SR 1364	FROM SR 1370 TO SR 1366 (MP 0.00 - MP 3.10)	2	2WU	NO	NO	3.1	18	350						
		10	SR 1346	FROM I-26 TO EOM (MP 0.00 - MP 1.30)	2	2WU	NO	NO	1.3	18	1,625						
		11	SR 1624	FROM SR 1604 TO EOM (MP 0.00 - MP 0.33)	2	2WU	NO	NO	0.33	20	100						
		12	SR 1604	FROM SR 1582 TO EOM (MP 0.00 - MP 0.45)	2	2WU	NO	NO	0.45	20	200						
		13	SR 1180	FROM SR 1181 TO SR 1181 (MP 0.00 - MP 3.23)	2	2WU	NO	NO	3.23	20	1,000						
		14	SR 1431	FROM SR 1346 TO EOP (MP 0.00 - MP 0.21)	2	2WU	NO	NO	0.21	19	50						
		TOTAL FOR PROJ NO. 2017CPT.13.03.20571									22.05				4,825	2,405	1
		2017CPT.13.03.20572	Madison	15	SR 1374	FROM SR 1375 TO EOP (MP 0.00 - MP 0.60)	2	2WU	NO	NO	0.6			18	100	950	*
				16	SR 1376	FROM SR 1375 TO EOP (MP 0.00 - MP 0.20)	2	2WU	NO	NO	0.2			18	60		
				17	SR 1382	FROM SR 1383 TO SR 1380 (MP 0.00 - MP 0.51)	2	2WU	NO	NO	0.51			18	100		
				18	SR 1107	FROM SR 1001 TO BUNCOMBE COUNTY LINE (MP 0.00 - MP 2.51)	2	2WU	NO	NO	2.51			18	350		
19	SR 1453			FROM US 25/70 TO US 25/70 (MP 0.00 - MP 0.78)	2	2WU	NO	NO	0.78	20	80						
20	SR 1622			FROM SR 1509 TO EOM (MP 0.00 - MP 0.20)	2	2WU	NO	NO	0.2	18	60						
21	SR 1152			FROM SR 1153 TO EOP (MP 0.00 - MP 0.61)	2	2WU	NO	NO	0.61	18	60						
22	SR 1153			FROM SR 1151 TO SR 1152 (MP 0.00 - MP 0.37)	2	2WU	NO	NO	0.37	18	15						
23	SR 1375			FROM SR 1370 TO EOP (MP 0.00 - MP 1.85)	2	2WU	NO	NO	1.85	18	300						
24	SR 1457			FROM US 23A TO SR 1503 (MP 0.00 - MP 0.40)	2	2WU	NO	NO	0.4	18	135						
25	SR 1136			SR 1135 TO SR 1203 (MP 1.10 - MP 1.55)	2	2WU	NO	NO	0.45	19	290						
TOTAL FOR PROJ NO. 2017CPT.13.03.20572									8.48		1,550	950	1				

PROJECT NO	COUNTY	MAP NO	ROUTE	DESCRIPTION	LANES	LANE TYPE	FINAL SURFACE TESTING REQUIRED	WARM MIX ASPHALT REQUIRED	LENGTH MI	WIDTH FT	PATCHING EXISTING PAVEMENT TON	WORK ZONE ADVANCE/GENERAL WARNING SIGNING SF	TEMPORARY TRAFFIC CONTROL LS
2017CPT.13.07.11001	Yancey	26	NC 197N	FROM US 19E TO 0.35 MILES WEST OF SR 1422 (MP 16.57 - MP 22.67)	2	2WU	NO	NO	6.1	24.5	750	855	*
		27	US 19W	FROM BRIDGE NO. 55 TO SR 1387 (MP 8.89 - MP 10.44)	2	2WU	NO	NO	1.55	20	400		
TOTAL FOR PROJ NO. 2017CPT.13.07.11001									7.65		1,150	855	1
2017CPT.13.07.21001	Yancey	28	SR 1126	FROM MADISON COUNTY LINE TO SR 1136 (MP 0.00 - MP 4.10)	2	2WU	NO	NO	4.1	20	150	2,291	*
		29	SR 1140	FROM US 19E TO EOP (MP 0.00 - MP 0.41)	2	2WU	NO	NO	0.41	19	360		
		30	SR 1354	FROM SR 1336 TO US 19W (MP 0.00 - MP 4.00)	2	2WU	NO	NO	4	18	500		
		31	SR 1352	FROM SR 1351 TO EOP (MP 0.00 - MP 0.70)	2	2WU	NO	NO	0.7	18	100		
		32	SR 1167	FROM NC 80 TO PVMT CHANGE (MP 0.00 - MP 1.50)	2	2WU	NO	NO	1.5	18	300		
		33	SR 1315	FROM SR 1308 TO EOP (MP 0.00 - MP 1.14)	2	2WU	NO	NO	1.14	18	250		
		34	SR 1317	FROM SR 1308 TO SR 1308 (MP 0.00 - MP 3.73)	2	2WU	NO	NO	3.73	16	350		
		35	SR 1369	FROM NC 197 TO SCHOOL CIRCLE (MP 0.00 - MP 1.91)	2	2WU	NO	NO	1.91	18	200		
36	SR 1102	FROM NC 197 TO EOP (MP 0.00 - MP 2.70)	2	2WU	NO	NO	2.7	18	300				
TOTAL FOR PROJ NO. 2017CPT.13.07.21001									20.19		2,510	2,291	1
2017CPT.13.07.21002	Yancey	37	SR 1104	FROM SR 1105 TO EOP (MP 0.00 - MP 0.15)	2	2WU	NO	NO	0.15	18	15	442	*
		38	SR 1105	FROM SR 1102 TO EOP (MP 0.00 - MP 0.80)	2	2WU	NO	NO	0.8	18	15		
		39	SR 1111	FROM SR 1112 TO EOP (MP 0.00 - MP 0.07)	2	2WU	NO	NO	0.07	18	15		
		40	SR 1112	FROM NC 197 TO EOP (MP 0.00 - MP 1.11)	2	2WU	NO	NO	1.11	18	90		
		41	SR 1351	FROM SR 1336 TO EOP (MP 0.00 - MP 2.00)	2	2WU	NO	NO	2	18	150		
TOTAL FOR PROJ NO. 2017CPT.13.07.21002									4.13		285	442	1
GRAND TOTAL									74.91		12,085	8,325	1